

MONTHLY MEMBERSHIP PROGRESS REPORT

District 16 J

Results as of: 3/31/2026

GMT:

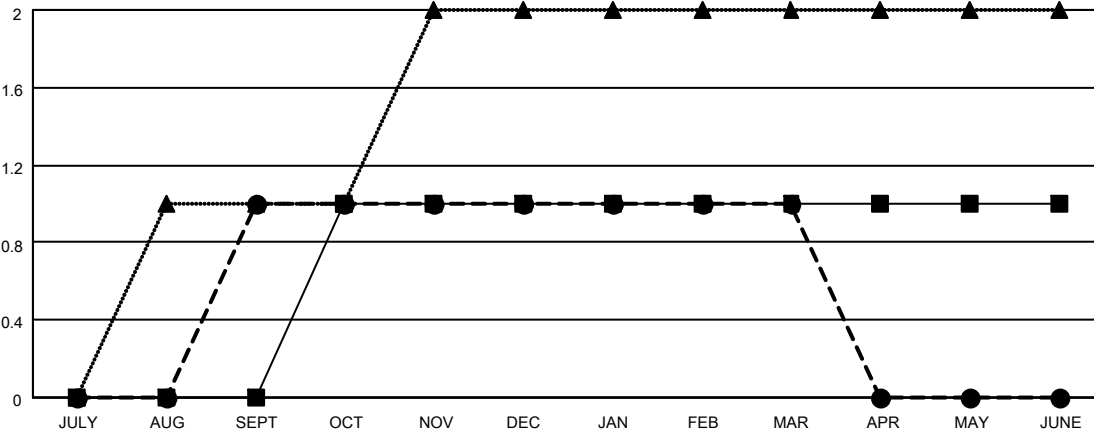
LOCATION NEW JERSEY

GMT CA

| Clubs | | | |
|-----------------------|---------------|-----------|---------------|
| RESULTS FOR 2025-2026 | | | |
| QUARTER | NEW CLUB GOAL | NEW CLUBS | DROPPED CLUBS |
| JULY/AUG/SEPT | 0 | 1 | 0 |
| OCT/NOV/DEC | 1 | 0 | 1 |
| JAN/FEB/MAR | 0 | 0 | 0 |
| APR/MAY/JUNE | 0 | 0 | 0 |

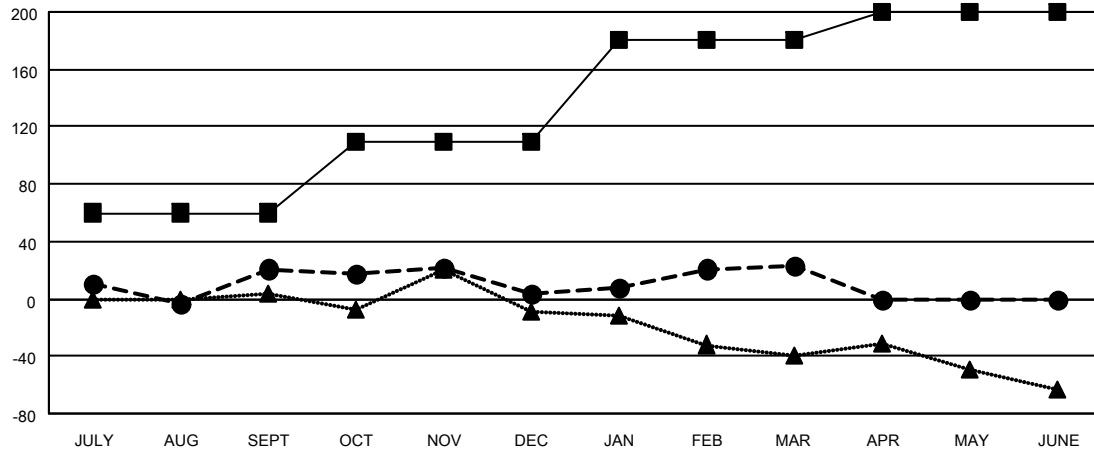
| Members | | | |
|-----------------------|------------------------|----------------------|--|
| RESULTS FOR 2025-2026 | | | |
| QUARTER | MEMBER GROWTH NET GOAL | MEMBER GROWTH ACTUAL | DROPPED MEMBERS ACTUAL (including transfers) |
| JULY/AUG/SEPT | 60 | 54 | 33 |
| OCT/NOV/DEC | 50 | 17 | 31 |
| JAN/FEB/MAR | 70 | 37 | 18 |
| APR/MAY/JUNE | 20 | 0 | 0 |

GOALS AND ACTUAL NEW CLUBS CUMULATIVE



- - CURRENT YEAR GOALS FOR NEW CLUBS
- - CURRENT YEAR ACTUAL NEW CLUBS
- ▲ - LAST YEAR ACTUAL NEW CLUBS

GOALS AND ACTUAL MEMBERS CUMULATIVE



- - MEMBER GROWTH NET GOAL
- - MEMBER GROWTH ACTUAL
- ▲ - LAST YEAR MEMBERSHIP ACTUAL

| | |
|------------------------|-----------|
| DROPPED CLUBS: 1 | |
| DROPPED MEMBERS | |
| DECEASED | 3 |
| CLUB CANCELLED | 1 |
| OTHER | 78 |
| TOTAL | 82 |

27 CLUBS OF 54 ADDED 1 OR MORE NEW MEMBERS

| GENDER DISTRIBUTION | |
|---------------------|--------------|
| MALE | 763 (62.95%) |
| FEMALE | 449 (37.05%) |

[CLICK HERE FOR CUMULATIVE MEMBERSHIP DATA](#)

| | |
|---------------------------------|-----|
| TOTAL FAMILY UNIT MEMBERS | 251 |
| FAMILY MEMBERS PAYING HALF DUES | 131 |